

11/1/2023

# Polder 35/1

Field Visit Report



tareq islam  
[COMPANY NAME]



Date	Polder Name	Chainage (Km)	ID of Structure
21.11.2023	Polder 35/1	0	DS-1

**Observation:** Vertical lift gate is partly open and it is operable. Flap gate is opened and it is not operable because chain pulley block is missing. A steel rope is used for keeping the flap gate open. Nut and bolts and steel rope are rusted.





Date	Polder Name	Chainage (Km)	ID of Structure
21.11.2023	Polder 35/1	3.332	DS-2

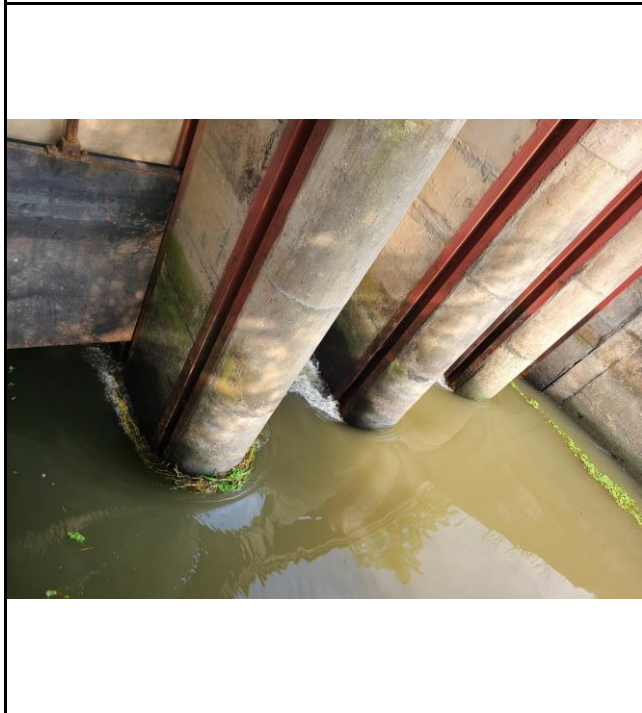
**Observation:** All Vertical lift gate are open and operable. Two flap gate is open and debries on the flap gate. Another flap gate is closed but not properly closed. All flap gate are not operable because chain pulley block missing. Steel rope used for keeping the flap gate open. There is rust on nuts, bolts and settel rope.





Date	Polder Name	Chainage (Km)	ID of Structure
21.11.2023	Polder 35/1	12.097	DS-4

**Observation:** All Vertical lift gate are open and operable. Two flap gate is open and two flap gates are closed. All flap gates are not operable because chain pulley block are missing. Two flap gates are tie by rope with the railing of the DS-4 structure. There are minor rust all over the steel surface.





Date	Polder Name	Chainage (Km)	ID of Structure
21.11.2023	Polder 35/1	14.39	DS-5

**Observation:** In this structure vertical lift gate is open and operable. We could not take picture due to heavy bush beside the wing wall of the structure. River side flap gate is open and not operable because chain pulley block is not available. There are lots of debries on the flap gate. A steel rope is use for keeping the flap gste open.





Date	Polder Name	Chainage (Km)	ID of Structure
21.11.2023	Polder 35/1	19.973	DS-6

**Observation:** In this structure vertical lift gate is partly open and operable. There are Water hyacinth on the country side lift gate. River side flap gate is open and not operable because chain pulley block is not available. There is lots of debris on flap gate. A steel rope is used for keeping the flap gates open. Steel rope, flap gates, nuts and bolts are rusted.





Date	Polder Name	Chainage (Km)	ID of Structure
21.11.2023	Polder 35/1	23.537	DS-7

**Observation:** In this structure vertical lift gate is closed and operable. River side flap gate is open and not operable because chain pulley block is not available. There are lots of debris and Water hyacinth on the flap gate. A steel rope is use for keeping the flap gates open. Steel rope, flap gates, nuts and bolts are rusted.





Date	Polder Name	Chainage (Km)	ID of Structure
21.11.2023	Polder 35/1	25.99	DS-8

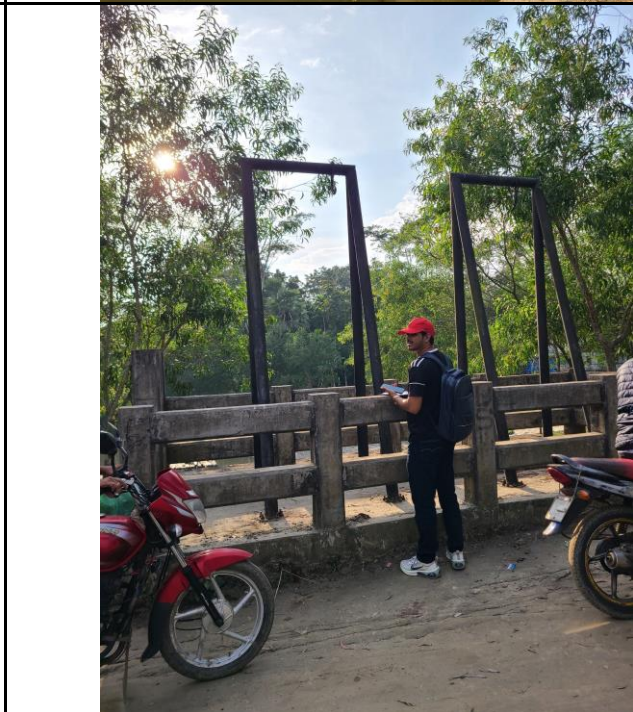
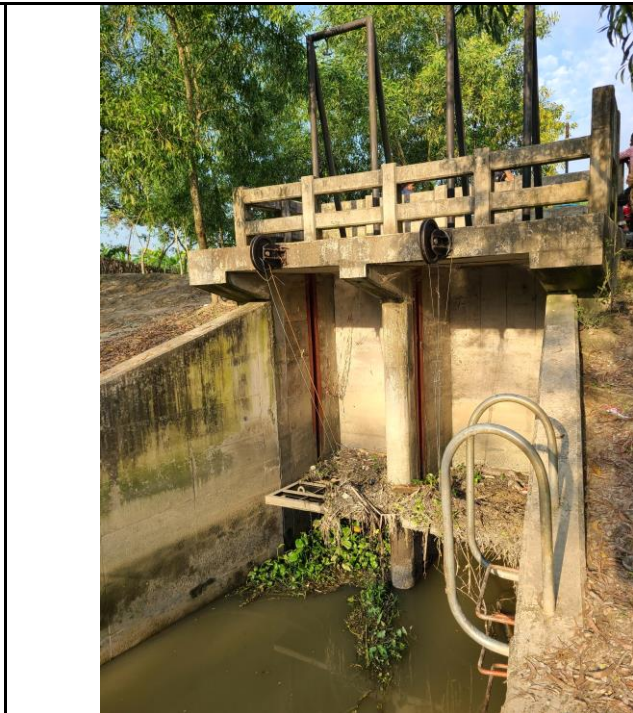
**Observation:** Both gates are open but flap gate is not operable because chain pulley block is missing. There is debris and water hyacinth on the flap gate. Lower portion of stem rod, Nuts and bolts are rusted.





Date	Polder Name	Chainage (Km)	ID of Structure
23.11.2023	Polder 35/1	39.405	DS-11

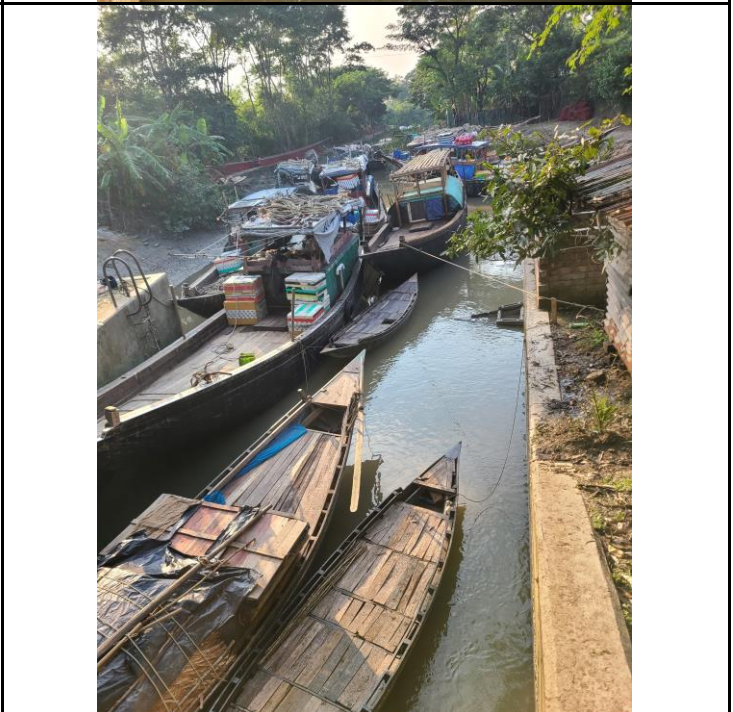
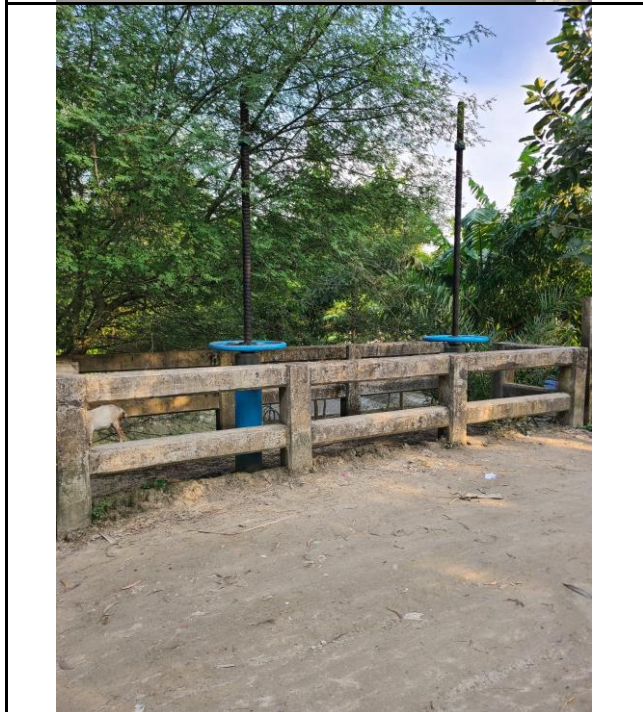
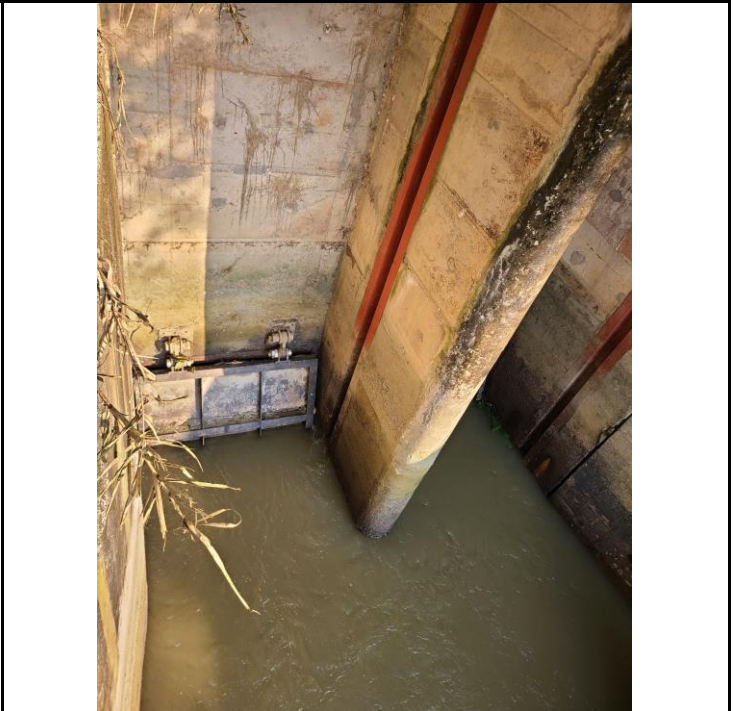
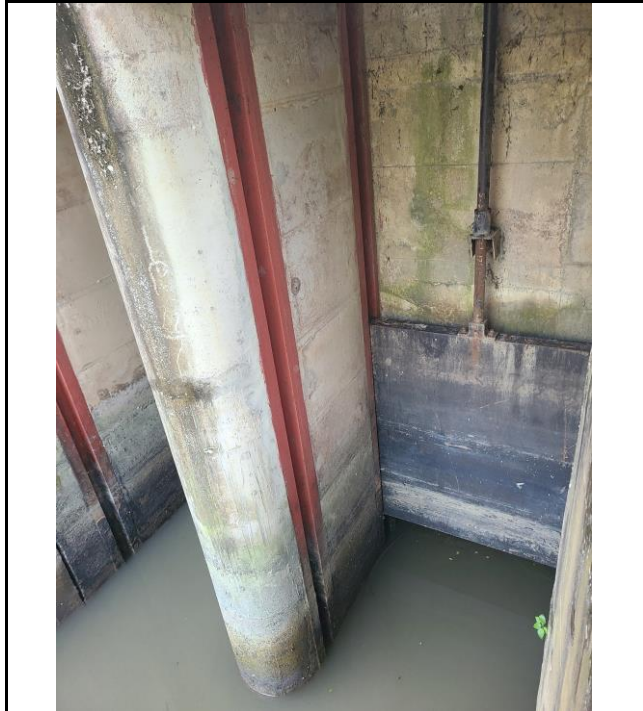
**Observation:** Both gates are in C/S is opened and operable. Flap gates are opened but not operable because chain pulley block and steel hook are missing. There are debris and water hyacinth on the flap gate. Local People have tied the flap gate with steel rope at the railing. Nuts and bolts has rusted.





Date	Polder Name	Chainage (Km)	ID of Structure
23.11.2023	Polder 35/1	44.097	DS-12

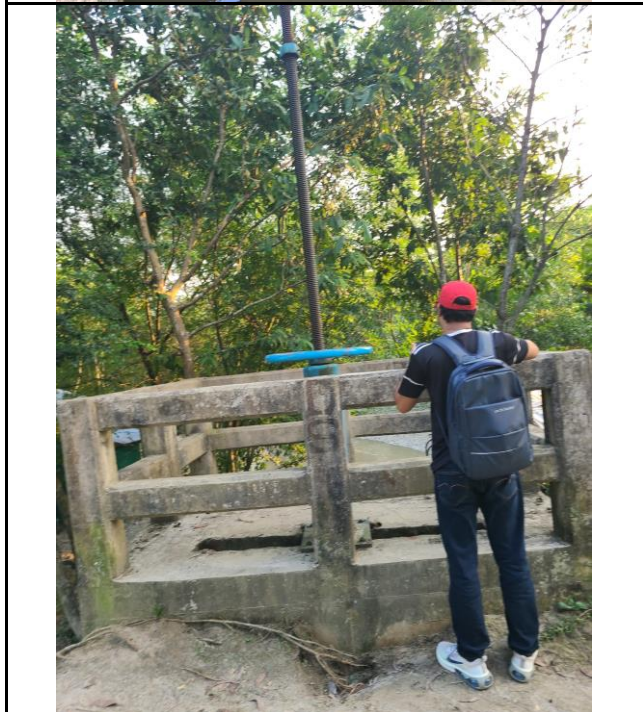
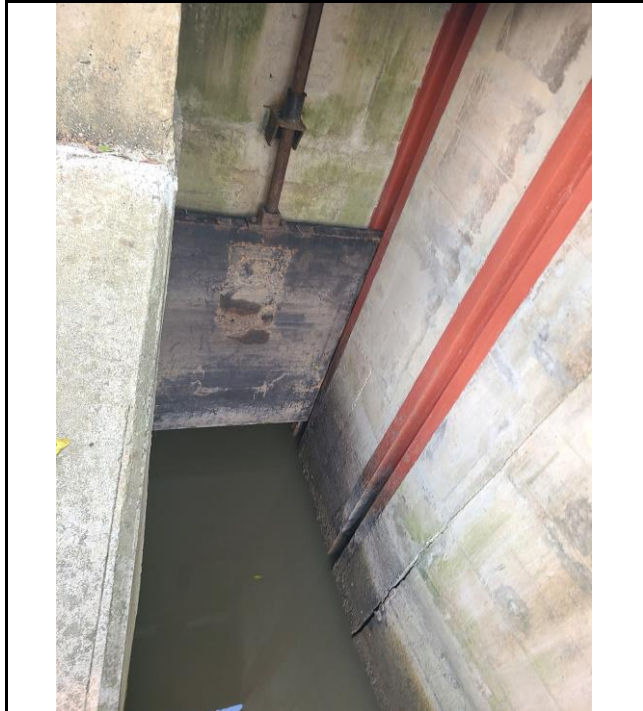
**Observation:** Both gates are in C/S is opened and operable. River side gates or flap gates are opened but not operable Because chain pulley block and steel hook is missing. Water was running even though the flap gate was closed. There is medium rust on the Nuts and Bolts and steel surface.





Date	Polder Name	Chainage (Km)	ID of Structure
23.11.2023	Polder 35/1	50.253	DS-16

**Observation:** Lift gate is open and operable. Flap gate is open but not operable because chain pulley block is missing. There are debris on the flap gate. Local People have tied the flap gate with steel rope at the railing. Lower portion of stem rod and lift gate are seen severely rusted. Nuts and bolts are rusted.





Date	Polder Name	Chainage (Km)	ID of Structure
23.11.2023	Polder 35/1	50.253	DS-17

**Observation:** Lift gate is open and operable and flap gate is open but not operable, because chain pulley block is missing. There are debris on the flap gate. Local People have tied the flap gate with steel rope at the hook. Lower portion of stem rod and lift gate are seen severely rusted, Nuts and bolts are rusted.





Date	Polder Name	Chainage (Km)	ID of Structure
23.11.2023	Polder 35/1	53.94	DS-13

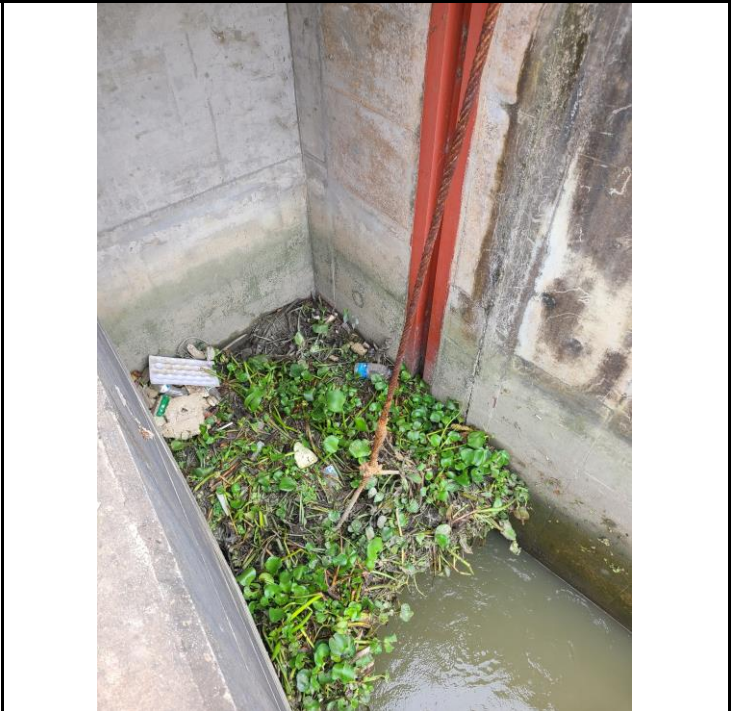
**Observation:** Lift gate is open and operable and flap gate is also open but not operable, because chain pulley block is missing. There are debris in the both gates. Local People have tied the flap gate with steel rope at the hook. The lower portion of stem rod and lift gate are seen severely rusted. Nuts and bolts are rusted.





Date	Polder Name	Chainage (Km)	ID of Structure
23.11.2023	Polder 35/1	57.252	DS-14

**Observation:** Lift gate is closed and operable and flap gate is also open but not operable, Because chain pulley block is missing. There are debris on the flap gate. Local People have tied the flap gate with steel rope with at the hook. The lower portion of stem rod and lift gate are seen severely rusted. Nuts and bolts are rusted.





Date	Polder Name	Chainage (Km)	ID of Structure
21.11.2023	Polder 35/1	59.745	DS-15

**Observation:** Both gates are open but flap gate is not operable, because the chain pulley block is missing. There are debris and water hyacinth on the flap gate. Local People have tied the flap gate with steel rope at the railing. Lower portion of stem rod and lift gate are seen severely rusted. Nuts and bolts are rusted.





Date	Polder Name	Chainage (Km)	ID of Structure
21.11.2023	Polder 35/1	0.735	FS-1

**Observation:** Vertical lift gate is in good condition. The vertical lift gate is operable. Flap gate is in closed condition and flap gate is not operable because chain pulley block and steel rope is missing from flap gate.





Date	Polder Name	Chainage (Km)	ID of Structure
21.11.2023	Polder 35/1	5.743	FS-2

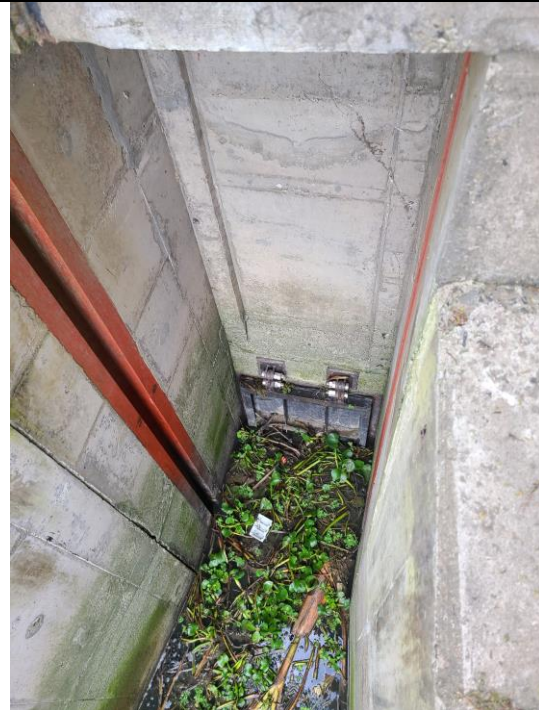
**Observation:** Vertical lift gate is in good condition. The vertical lift gate is operable. Flap gate is open and flap gate is not operable because chain pulley block is missing. There are debries and water hyacinth on the flap gate. There is rust on the steel surface, stem rod and nuts and bolts.





Date	Polder Name	Chainage (Km)	ID of Structure
21.11.2023	Polder 35/1	9.44	FS-4

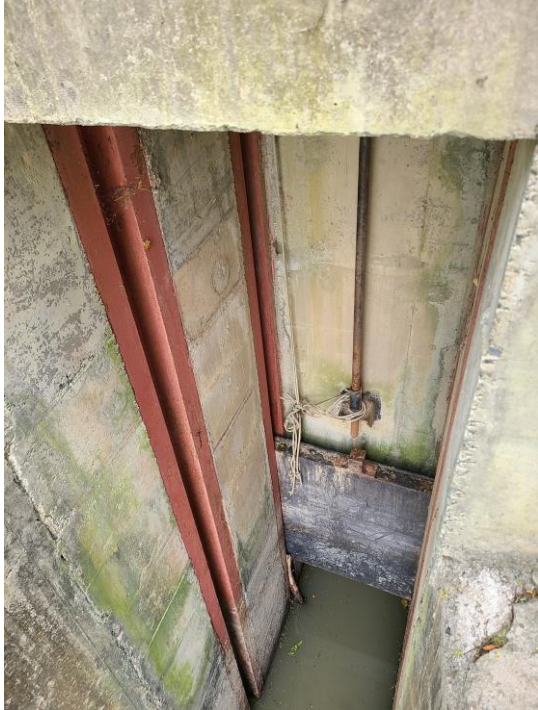
**Observation:** Vertical lift gate is in good condition. The vertical lift gate is operable but we could not take lift gate photo for bush beside the wing wall of the sluice. Flap gate is closed and flap gate is not operable because Chain pulley block is missing . There are debries and water hyacinth on the flap gate. There is rust on the steel surface, stem rod and nuts and bolts.





Date	Polder Name	Chainage (Km)	ID of Structure
21.11.2023	Polder 35/1	16.744	FS-5

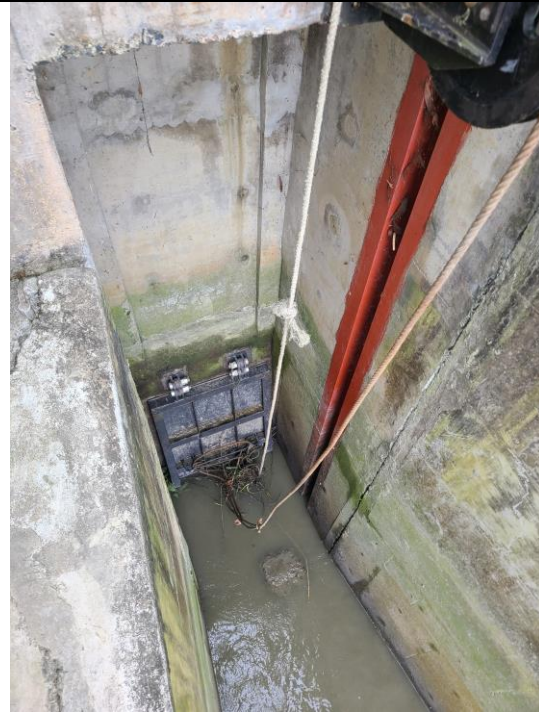
**Observation:** Vertical lift gate is in good condition. The vertical lift gate is operable . Flap gate is closed and flap gate is not operable because Chain pulley block is missing from flap gate. There is debris and water hyacinth on the flap gate. There is rust on the steel surface, stem rod and nuts and bolts.





Date	Polder Name	Chainage (Km)	ID of Structure
21.11.2023	Polder 35/1	20.214	FS-7

**Observation:** Vertical lift gate is in good condition. The vertical lift gate is operable . Flap gate is closed and flap gate is not operable because Chain pulley block is missing from flap gate. There is debries and water hyacinth on the flap gate. There is rust on the steel surface, stem rod and nuts and bolts.





Date	Polder Name	Chainage (Km)	ID of Structure
23.11.2023	Polder 35/1	30.71	FS-7

**Observation:** Vertical lift gate is in good condition. The vertical lift gate is operable . Flap gate is closed and flap gate is not operable because Chain pulley block is missing from flap gate. There are debris and water hyacinth on the flap gate. There is rust on the steel surface, stem rod and nuts and bolts.





Date	Polder Name	Chainage (Km)	ID of Structure
23.11.2023	Polder 35/1	31.821	FS-12

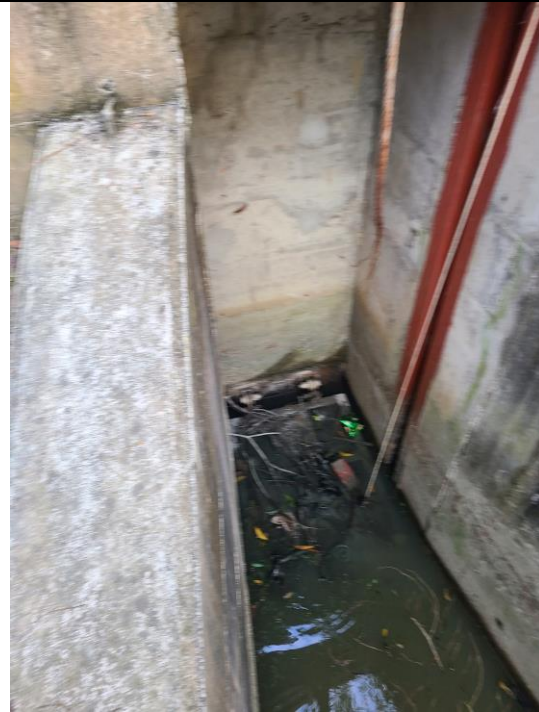
**Observation:** Vertical lift gate is in good condition. The vertical lift gate is operable . Flap gate is closed and flap gate is not operable because Chain pulley block is missing. Flap gate is under water. There are debries and water hyacinth. There is rust on the steel surface, stem rod and nuts and bolts.





Date	Polder Name	Chainage (Km)	ID of Structure
23.11.2023	Polder 35/1	42.808	FS-16

**Observation:** Vertical lift gate is in good condition. The vertical lift gate is operable . Flap gate is open and flap gate is not operable. Flap gate is under water . Chain pulley block is missing from flap gate. There are debries and water hyacinth. There is rust on the steel surface, stem rod and nuts and bolts.





Date	Polder Name	Chainage (Km)	ID of Structure
23.11.2023	Polder 35/1	51.4	FS-17

**Observation:** Vertical lift gate is in good condition. The vertical lift gate is operable . Flap gate is open and flap gate is not operable because Chain pulley block is missing. There are debries and water hyacinth. There is rust on the steel surface, stem rod and nuts and bolts.





Date	Polder Name	Chainage (Km)	ID of Structure
23.11.2023	Polder 35/1	55	FS-18

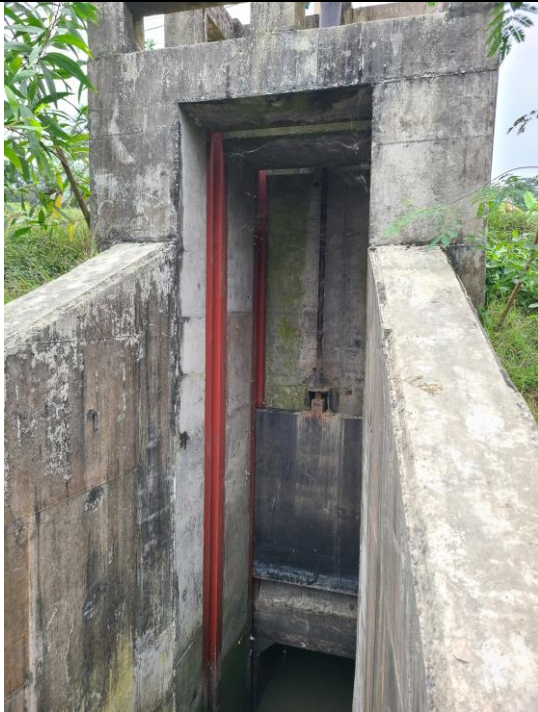
**Observation:** Vertical lift gate is in good condition and closed. The vertical lift gate is operable . Flap gate is open and flap gate is not operable because Chain pulley block is missing. There are debris and water hyacinth. There is rust on the steel surface, stem rod and nuts and bolts.





Date	Polder Name	Chainage (Km)	ID of Structure
23.11.2023	Polder 35/1	56	FS-19

**Observation:** Vertical lift gate is in good condition and open. The vertical lift gate is operable . Flap gate is open and flap gate is not operable because Chain pulley block is missing . There are debris and water hyacinth. There is rust on the steel surface, stem rod and nuts and bolts. Local People tie flap gate with a steel rope at the structure railings.





Date	Polder Name	Chainage (Km)	ID of Structure
23.11.2023	Polder 35/1	61.24	FS-22

**Observation:** Vertical lift gate is in good condition and open. The vertical lift gate is operable . Flap gate is closed and flap gate is not operable because Chain pulley block is missing. There are debris in the bottom of flap gate. There is rust on the steel surface, stem rod and nuts and bolts. Local People tie flap gate with a steel rope at the structure railings.

